

Charle magne



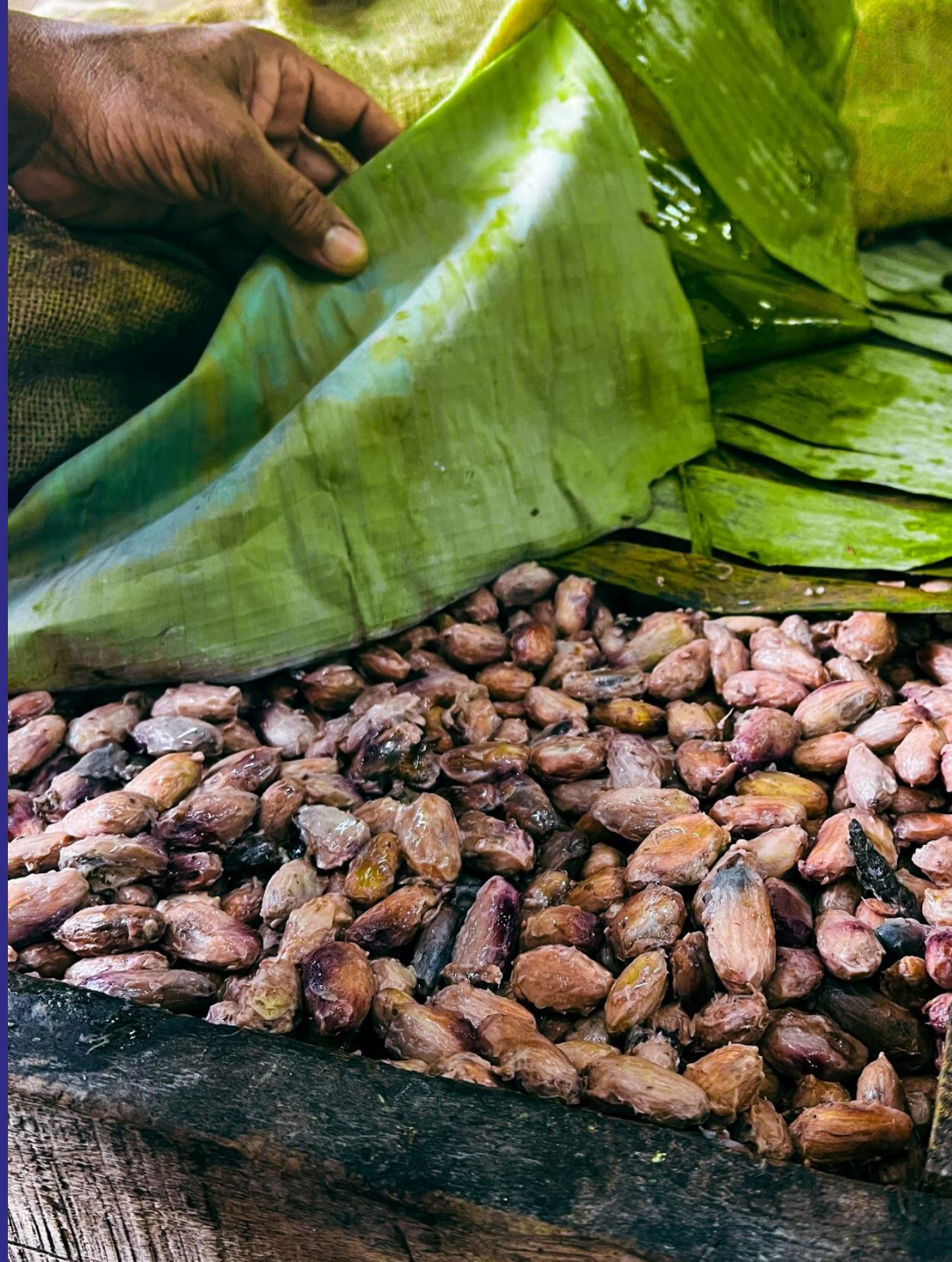
A stylized sunburst graphic in a golden-brown color, consisting of numerous sharp, elongated rays radiating from a central point. The rays are of varying lengths and angles, creating a dynamic, starburst effect. The text 'SACRÉ CHOCOLAT!' is written in a bold, serif font, with the words stacked vertically and slightly overlapping. The text is positioned in the upper left quadrant of the image, partially overlapping the sunburst graphic.

SACRÉ
CHOCOLAT!

THE BEAN TO BAR COLLECTION
AN ADVENTURE IN SEARCH OF EXCELLENCE

MEET THE FARMERS

The bean-to-bar adventure all starts with a visit to the cocoa farmers to discover the beans that deliver the unique aroma and flavors that inspire our gourmet creations.





THE SECRET BEHIND EXCEPTIONAL CHOCOLATES

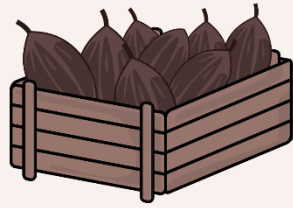
The precious beans are then roasted at a low temperature to bring out their natural character. In the mill and conche, the cocoa is ground and mixed with the other ingredients... but that is Charlemagne's secret.

LE BEAN TO BAR IN IMAGES

The manufacturing of the Charlemagne chocolates



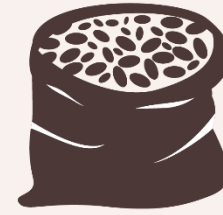
Harvest



Fermentation



Drying



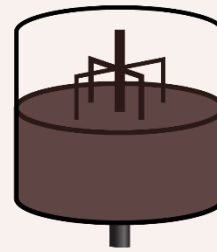
Bagging



Roasting



Grinding



Conching



Moulding



Chocolate bar



AMONGST OUR VALUES

We are committed to paying our bean producers a decent wage: we offer them a price well above the minimum market price recommended by Fairtrade.



Tablet
50g

Tastes

Dark grand cru O'Tuma
Dark grand cru O'Payo
Chef's dark
Dark Guérande salt (as from 01/10/2023)
Dark crunchy coffee
Milk intense cocoa
Milk salted butter caramel
Milk passion fruit
Milk speculoos



Charle magne



Weekly box
7 chocolate squares
59,5g



Tastes
Dark grand cru O'Tuma
Dark grand cru O'Payo
Chef's dark
Dark Guérande salt (as from 01/10/2023)
Dark crunchy coffee
Milk intense cocoa
Milk salted butter caramel
Milk passion fruit

Charle magne



Case 'Les 4 Fantastiques'

12 chocolate squares : Dark grand cru O'Tuma – Dark crunchy coffee – Milk intense cocoa – Milk salted butter caramel

Charle
magne

Commercial contact:
sales@charlemagne.be

Charlemagne Chocolatiers srl
Avenue Georges Truffaut, 50
B-4020 Liège
Belgium

T: +32 (0)4 264 66 44
charlemagne.be

A company of Food Family & Farmers